



WILLOW  
VALLEY  
COMMUNITIES

## A Single Monthly Service Fee That Includes Many Services to Make Your Lifestyle Complete

The many services at Willow Valley Communities, all of which are included in your Monthly Service Fee, provide a maintenance-free lifestyle in a vibrant and amenity-rich environment. Because it replaces many of your current expenses, such as property taxes, utilities, and home maintenance, you'll find our monthly fees are affordable and provide many added benefits. In addition, because Willow Valley Communities is a Type A Lifecare community, your monthly fee typically qualifies for a significant medical expense tax deduction and protects you from unpredictable long-term care costs.

Here are just some of the many services provided for one predictable monthly fee:

- Lifecare: Short- or long-term supportive care in personal care, memory support, and skilled nursing without an increase to your Monthly Service Fee because of the need for enhanced care
- Real estate taxes/property insurance
- Utilities: Electricity, water, sewer, heat, air conditioning, trash
- Maintenance and weekly or annual housekeeping (housekeeping frequency based on residence style selected)
- Lawn care, snow removal, and landscape maintenance
- 24-hour Residential Nursing support for emergency response
- Scheduled and On-Demand transportation services within Willow Valley Communities
- Scheduled transportation to area shopping venues, doctor offices, and grocery stores
- Use of all amenities at the Cultural Center and The Clubhouse including fitness and aquatics centers, aerobics studio, art studios, bowling alley, sports center, tennis courts, indoor/outdoor pool (seasonally), golf simulator, and vintage arcade
- Scheduled fitness, aquatics, and wellness classes (some fees may apply)
- Educational classes, lecture series, and seminars (some fees may apply)
- 100+ clubs and groups
- Flexible dining credit program for use at any of Willow Valley Communities' 12 dining venues, including our full-service gourmet restaurant, Local Table

# SouthPointe at Lakes

## SouthPointe Village: Hatfield

Left-Hand Configuration



Apartment  
2 Bedroom  
2.5 Bath  
1,704 Square Feet

FINISH MATERIAL KEY	
CARPET	
TILE	
CONCRETE	
HARDWOOD	

**All dimensions are approximate and subject to revision.**

Floor plans are not to scale in relation to one another and represent the residences in their original configuration.

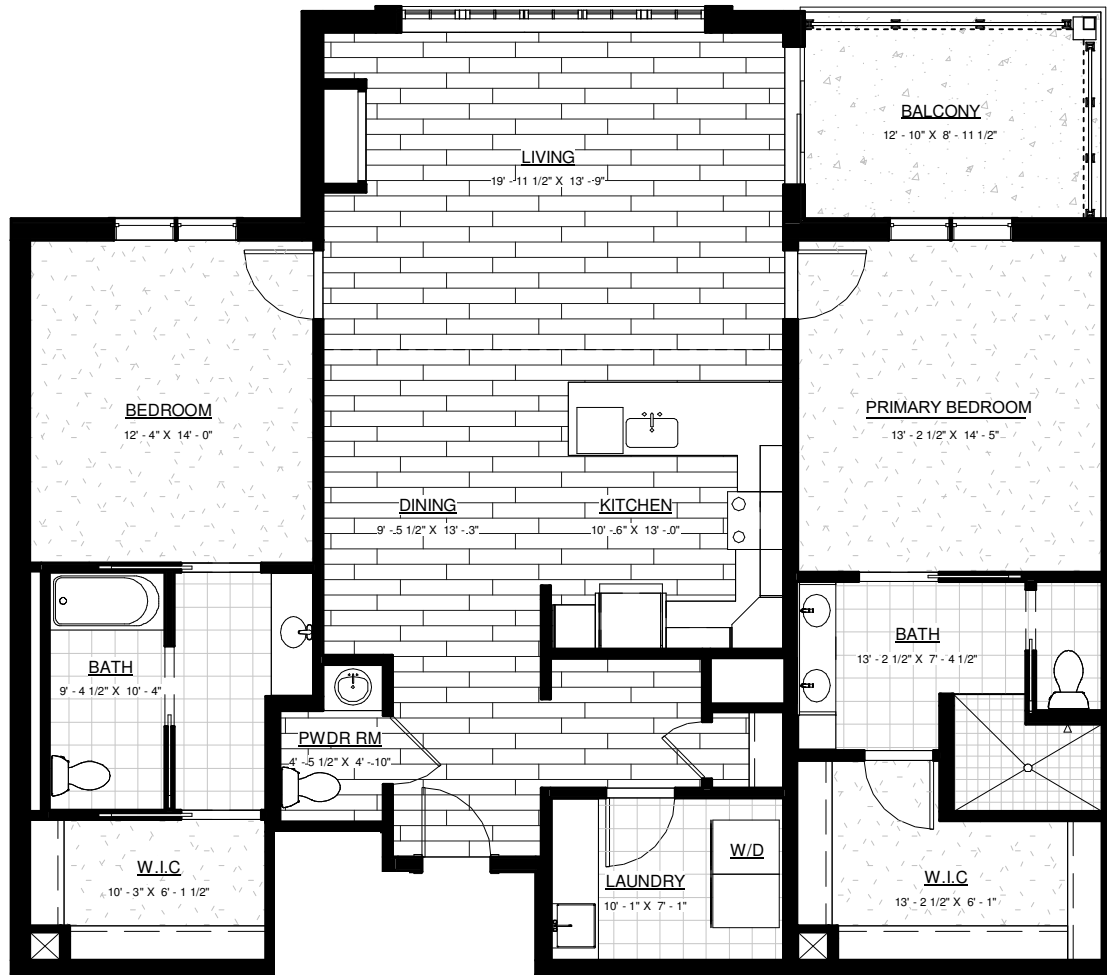


[WillowValleyCommunities.org](http://WillowValleyCommunities.org)  
800.770.5445

# SouthPointe at Lakes

## SouthPointe Village: Hatfield

Right-Hand Configuration



Apartment  
2 Bedroom  
2.5 Bath  
1,704 Square Feet

FINISH MATERIAL KEY	
CARPET	
TILE	
CONCRETE	
HARDWOOD	

**All dimensions are approximate and subject to revision.**

Floor plans are not to scale in relation to one another and represent the residences in their original configuration.



[WillowValleyCommunities.org](http://WillowValleyCommunities.org)  
800.770.5445