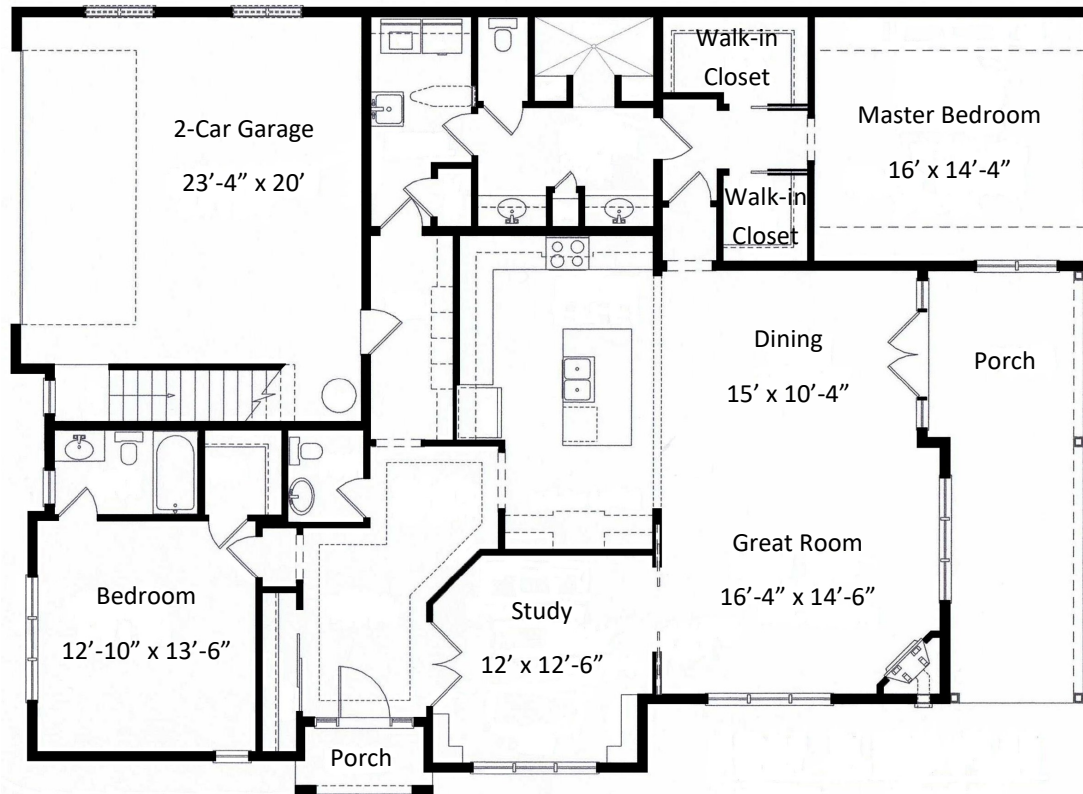


VILLA HOME



600 Willow Valley Square, Lancaster, PA 17602-4866
800.770.5445 | WillowValleyCommunities.org

All dimensions are approximate and subject to construction tolerances. Floor plans are not to scale in relation to one another and represent the residences in their original configuration. Previously occupied residences may include customizations that altered the original floor plan.

WARWICK

**Two Bedroom
Two and One Half Bath
with Study**
1,945 square feet

2021 Pricing

Entrance Fee

\$401,600

Monthly Service Fee

\$4,268

2nd Person Entrance Fee

\$26,000

2nd Person Monthly Fee

\$1,404



WILLOW
VALLEY
COMMUNITIES