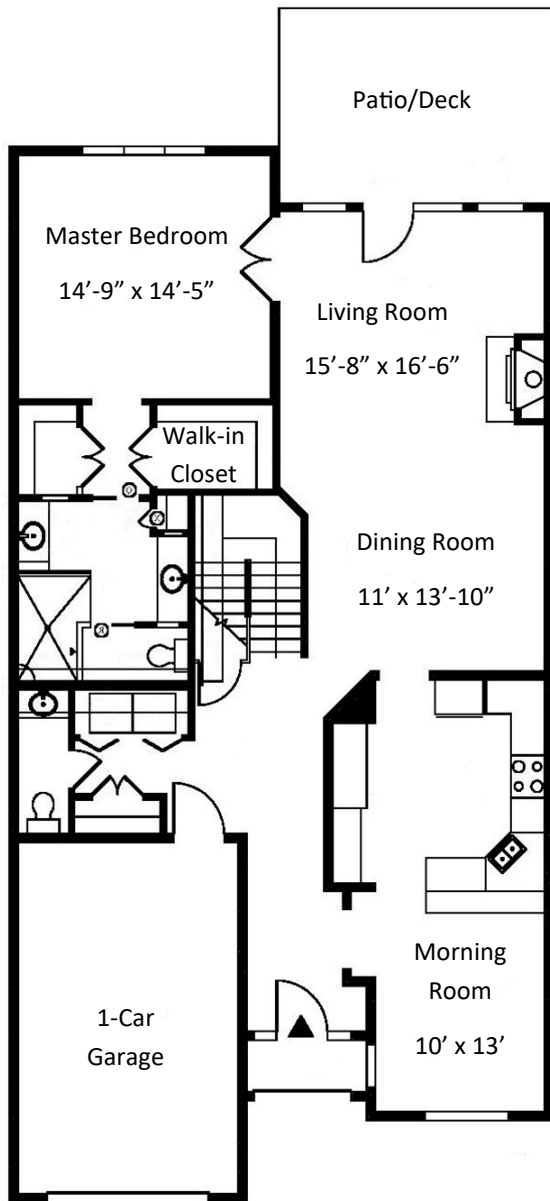


TOWNHOUSE



LYON

Two Bedroom

Two & One Half Bath

2,285 square feet

Entrance Fee \$425,600

Second Person Fee \$26,000

Monthly Fee \$4,483

**Second Person Monthly Fee
\$1,349**

FIRST FLOOR

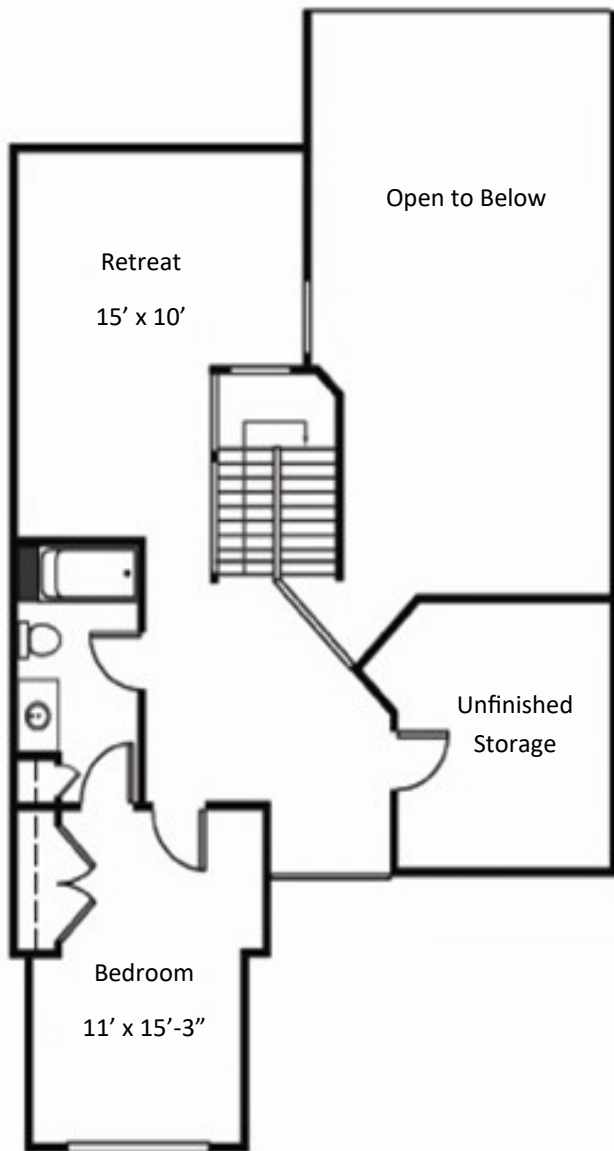
600 Willow Valley Square, Lancaster, PA 17602-4866
800.770.5445 | WillowValleyCommunities.org

All dimensions are approximate and subject to construction tolerances. Floor plans are not to scale in relation to one another and represent the residences in their original configuration. Previously occupied residences may include customizations that altered the original floor plan.



**WILLOW
VALLEY**
COMMUNITIES

TOWNHOUSE



LYON

Two Bedroom

Two & One Half Bath

2,285 square feet

Entrance Fee \$425,600

Second Person Fee \$26,000

Monthly Fee \$4,483

**Second Person Monthly Fee
\$1,349**

SECOND FLOOR

600 Willow Valley Square, Lancaster, PA 17602-4866
800.770.5445 | WillowValleyCommunities.org

All dimensions are approximate and subject to construction tolerances. Floor plans are not to scale in relation to one another and represent the residences in their original configuration. Previously occupied residences may include customizations that altered the original floor plan.



**WILLOW
VALLEY**
COMMUNITIES



A Single Monthly Fee That Includes Many Services to Make Your Lifestyle Complete

Here are just some of the many benefits and services provided for one predictable monthly fee:

- **Lifecare:** Short- or long-term care in personal care, memory support, and skilled nursing
- Real estate taxes/property insurance
- Utilities: Electricity, water, sewer, heat, air conditioning, trash
- Maintenance and weekly or annual housekeeping (*housekeeping frequency based on residence style selected*)
- Lawn care, snow removal, and landscape maintenance
- 24-hour Residential Nursing support for emergency response
- Scheduled and On-Demand transportation services within Willow Valley Communities
- Scheduled transportation to area shopping venues, doctor offices, and grocery stores
- Use of all amenities at the Cultural Center and The Clubhouse including fitness and aquatics centers, aerobics studio, art studios, bowling alley, sports center, tennis courts, indoor/outdoor pool (seasonally), golf simulator, and vintage arcade
- Scheduled fitness, aquatics, and wellness classes (*some fees may apply*)
- Educational classes, lecture series, and seminars (*some fees may apply*)
- 100+ clubs and groups
- Flexible dining credit program for use at any of Willow Valley's 12 dining venues, including our full-service restaurant, Local Table

800.770.5445 | WillowValleyCommunities.org

Willow Valley Communities Welcome Center: 450 Willow Valley Lakes Dr, Willow Street, PA 17584