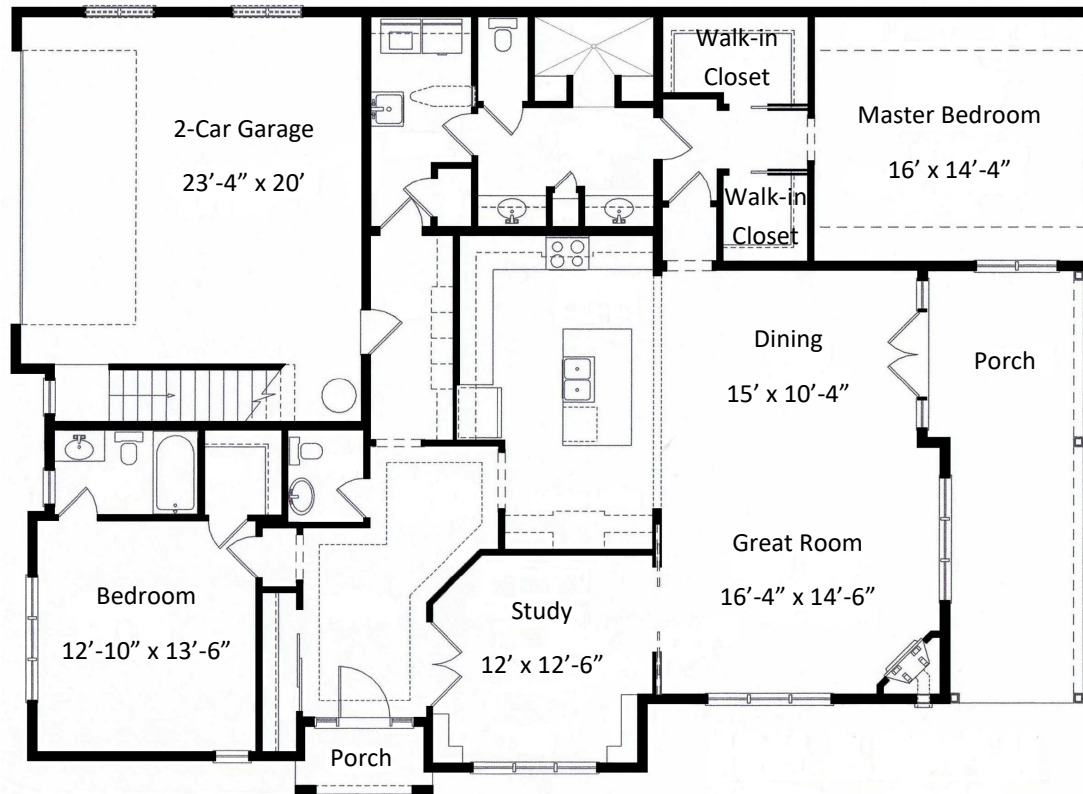


VILLA HOME



WARWICK

**Two Bedroom
Two and One Half Bath
with Study**
1,945 square feet

**Entrance Fee \$401,600
Monthly Fee \$3,980
Second Person Fee \$26,000
Second Person Monthly Fee \$1,309**

600 Willow Valley Square, Lancaster, PA 17602-4866
800.770.5445 | WillowValleyCommunities.org

All dimensions are approximate and subject to construction tolerances. Floor plans are not to scale in relation to one another and represent the residences in their original configuration. Previously occupied residences may include customizations that altered the original floor plan.



**WILLOW
VALLEY**
COMMUNITIES