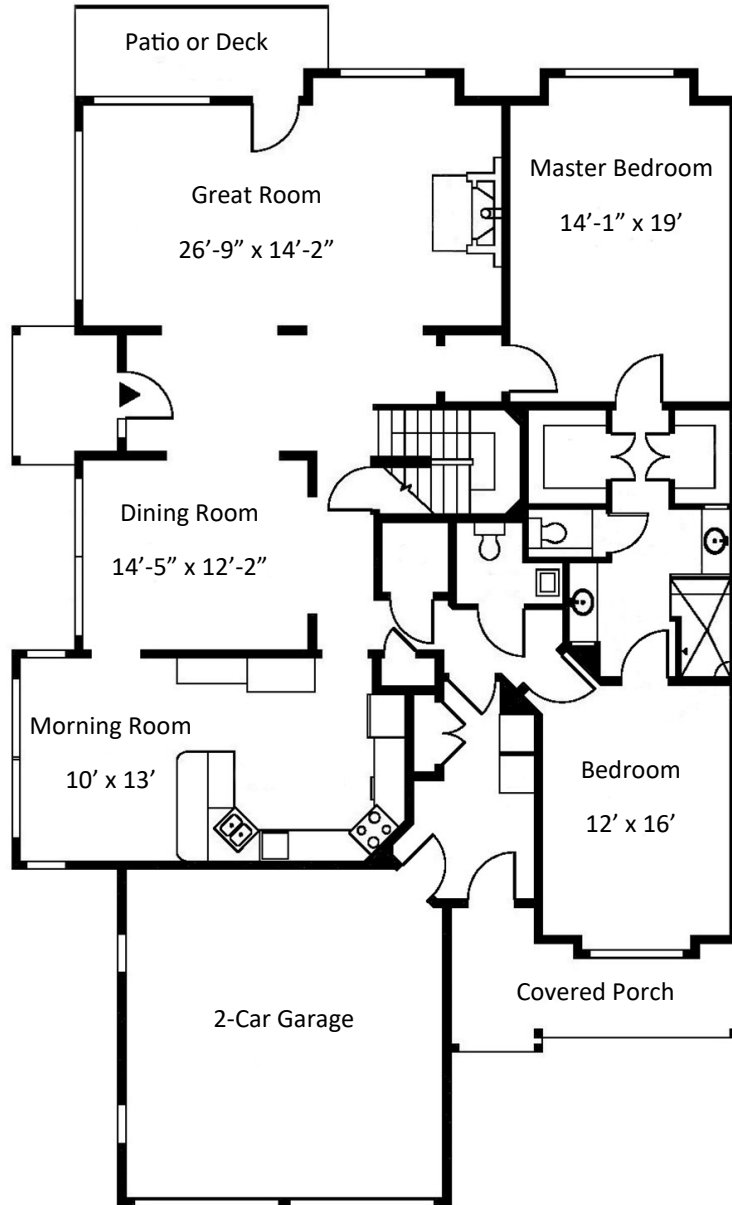


# TOWNHOUSE



## VERSAILLES

**Three Bedroom**  
**Two & One Half Bath**  
3,228 square feet

**Entrance Fee \$550,600**  
**Monthly Fee \$5,255**  
**Second Person Fee \$26,000**  
**Second Person Monthly Fee \$1,309**

FIRST FLOOR

*Continued on Next Page*

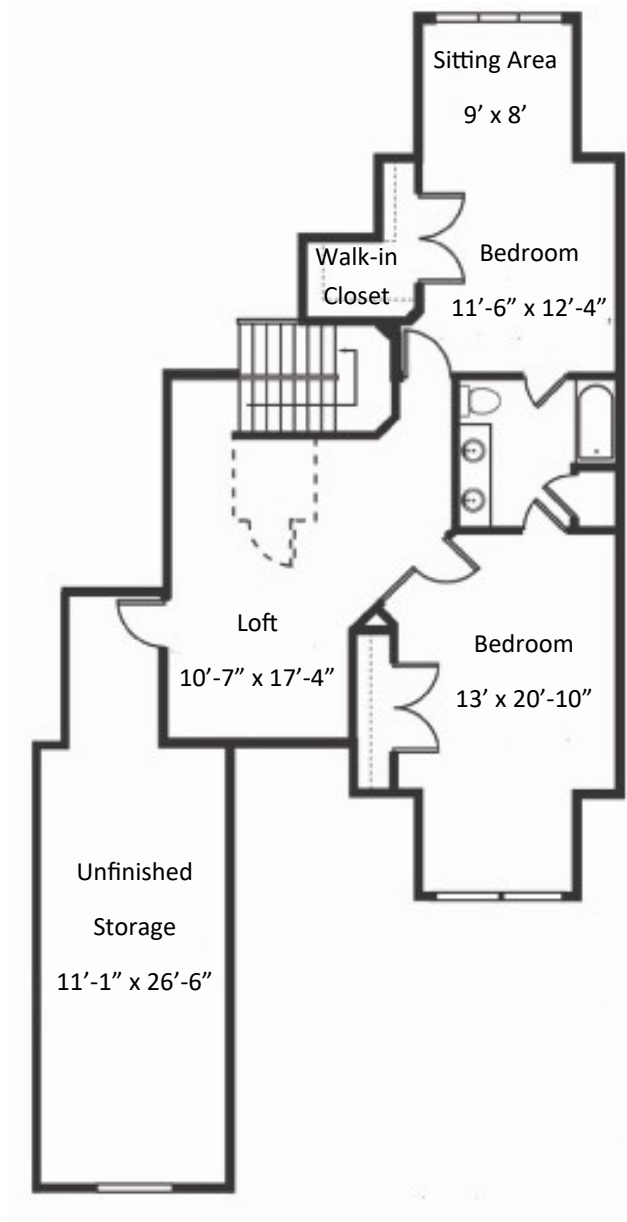
600 Willow Valley Square, Lancaster, PA 17602-4866  
800.770.5445 | WillowValleyCommunities.org

All dimensions are approximate and subject to construction tolerances. Floor plans are not to scale in relation to one another and represent the residences in their original configuration. Previously occupied residences may include customizations that altered the original floor plan.



**WILLOW  
VALLEY**  
COMMUNITIES

# TOWNHOUSE



## VERSAILLES

**Three Bedroom**

**Two & One Half Bath**

**3,228 square feet**

**Entrance Fee \$550,600**

**Monthly Fee \$5,255**

**Second Person Fee \$26,000**

**Second Person Monthly Fee**

**\$1,309**

SECOND FLOOR

600 Willow Valley Square, Lancaster, PA 17602-4866  
800.770.5445 | WillowValleyCommunities.org

All dimensions are approximate and subject to construction tolerances. Floor plans are not to scale in relation to one another and represent the residences in their original configuration. Previously occupied residences may include customizations that altered the original floor plan.



**WILLOW  
VALLEY**  
COMMUNITIES