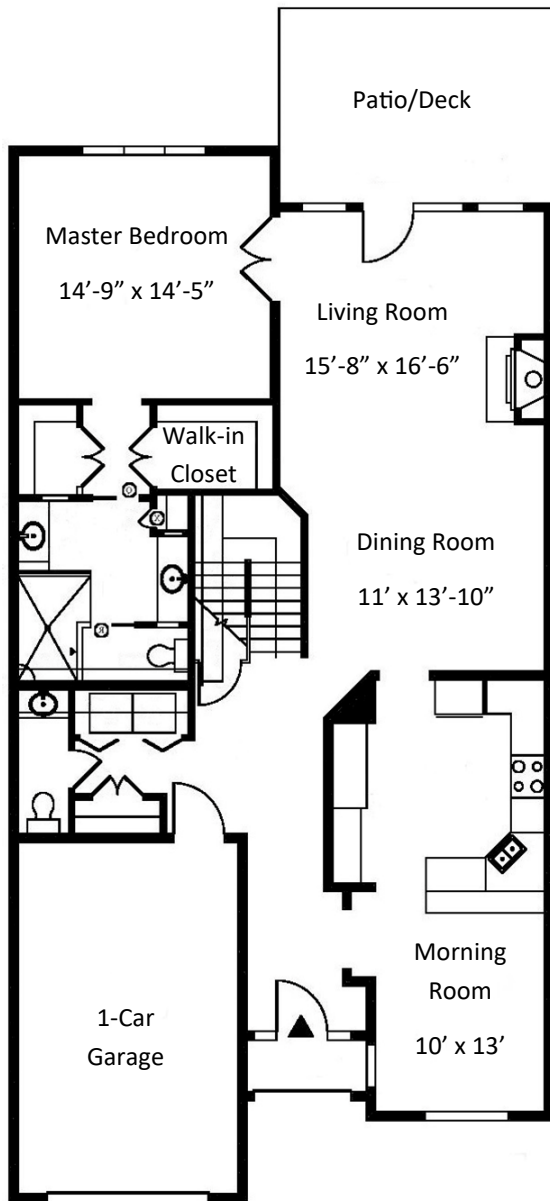


TOWNHOUSE



LYON

Two Bedroom

Two & One Half Bath

2,285 square feet

Entrance Fee \$425,600

Monthly Fee \$4,342

Second Person Fee \$26,000

**Second Person Monthly Fee
\$1,309**

FIRST FLOOR

Continued on next page

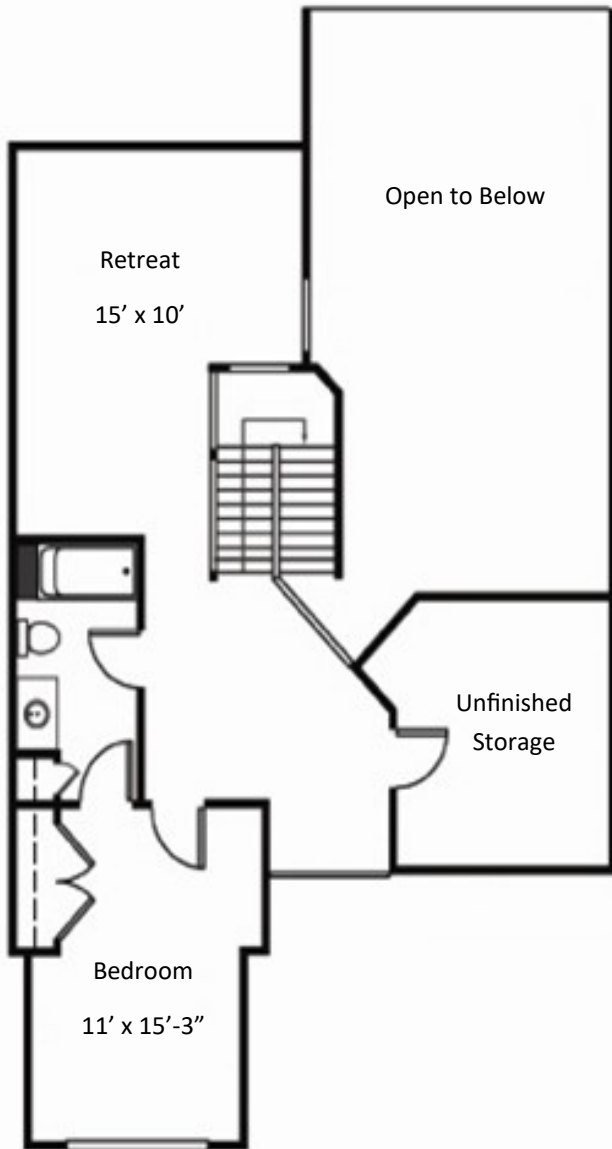
600 Willow Valley Square, Lancaster, PA 17602-4866
800.770.5445 | WillowValleyCommunities.org

All dimensions are approximate and subject to construction tolerances. Floor plans are not to scale in relation to one another and represent the residences in their original configuration. Previously occupied residences may include customizations that altered the original floor plan.



**WILLOW
VALLEY**
COMMUNITIES

TOWNHOUSE



LYON

Two Bedroom

Two & One Half Bath

2,285 square feet

Entrance Fee \$425,600

Monthly Fee \$4,342

Second Person Fee \$26,000

Second Person Monthly Fee

\$1,309

SECOND FLOOR

600 Willow Valley Square, Lancaster, PA 17602-4866
800.770.5445 | WillowValleyCommunities.org

All dimensions are approximate and subject to construction tolerances. Floor plans are not to scale in relation to one another and represent the residences in their original configuration. Previously occupied residences may include customizations that altered the original floor plan.



**WILLOW
VALLEY**
COMMUNITIES