



WILLOW  
VALLEY  
COMMUNITIES

## *A Single Monthly Fee That Includes Many Services to Make Your Lifestyle Complete*

**Here are just some of the many benefits and services provided for one predictable monthly fee:**

- **Lifecare:** Short- or long-term care in personal care, memory support, and skilled nursing
- Real estate taxes/property insurance
- Utilities: Electricity, water, sewer, heat, air conditioning, trash
- Maintenance and weekly or annual housekeeping (*housekeeping frequency based on residence style selected*)
- Lawn care, snow removal, and landscape maintenance
- 24-hour Residential Nursing support for emergency response
- Scheduled and On-Demand transportation services within Willow Valley Communities
- Scheduled transportation to area shopping venues, doctor offices, and grocery stores
- Use of all amenities at the Cultural Center and The Clubhouse including fitness and aquatics centers, aerobics studio, art studios, bowling alley, sports center, tennis courts, indoor/outdoor pool (seasonally), golf simulator, and vintage arcade
- Scheduled fitness, aquatics, and wellness classes (*some fees may apply*)
- Educational classes, lecture series, and seminars (*some fees may apply*)
- 100+ clubs and groups
- Flexible dining credit program for use at any of Willow Valley's 12 dining venues, including our full-service restaurant, Local Table

800.770.5445 | [WillowValleyCommunities.org](http://WillowValleyCommunities.org)

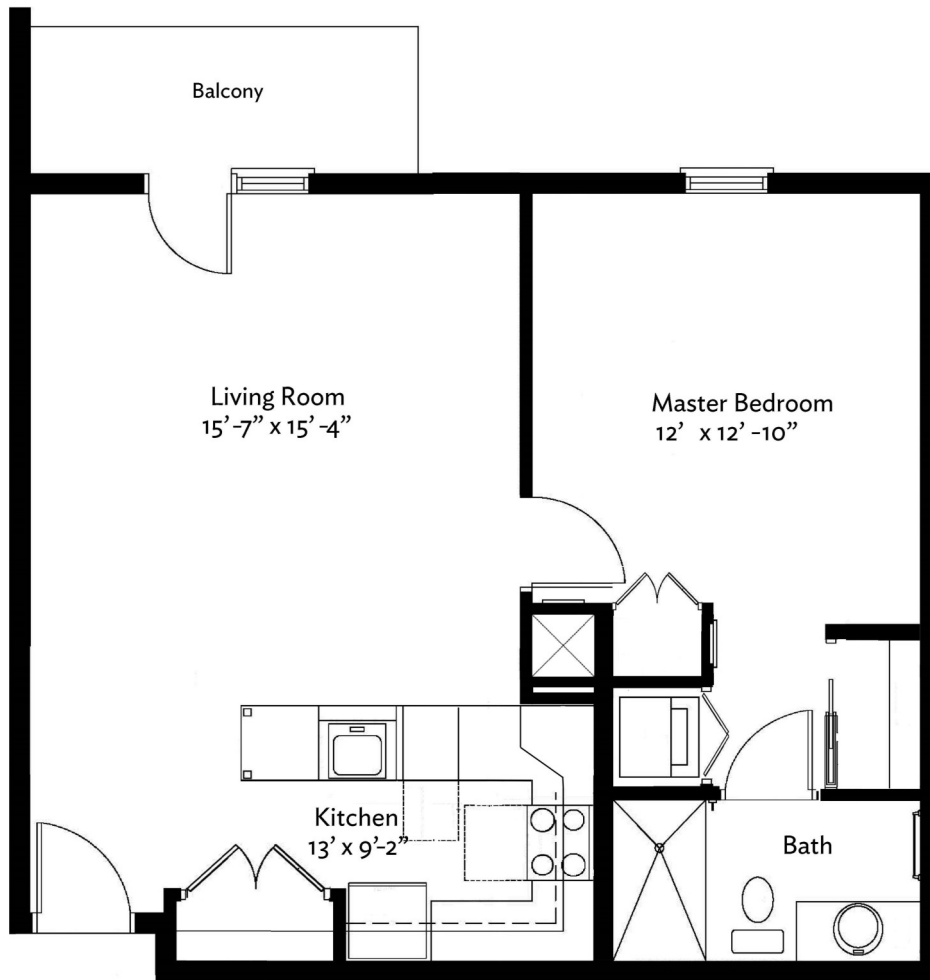
Willow Valley Communities Welcome Center: 450 Willow Valley Lakes Dr, Willow Street, PA 17584

# APARTMENT HOME

**PENNINGTON**

**One Bedroom**

840 square feet



**Limited Time Offer\***

Entrance Fee **\$167,600**

**\$139,600**

Second Person Fee **\$26,000**

Monthly Fee **\$2,338**

***\*Promotional pricing available through July 31, 2019***

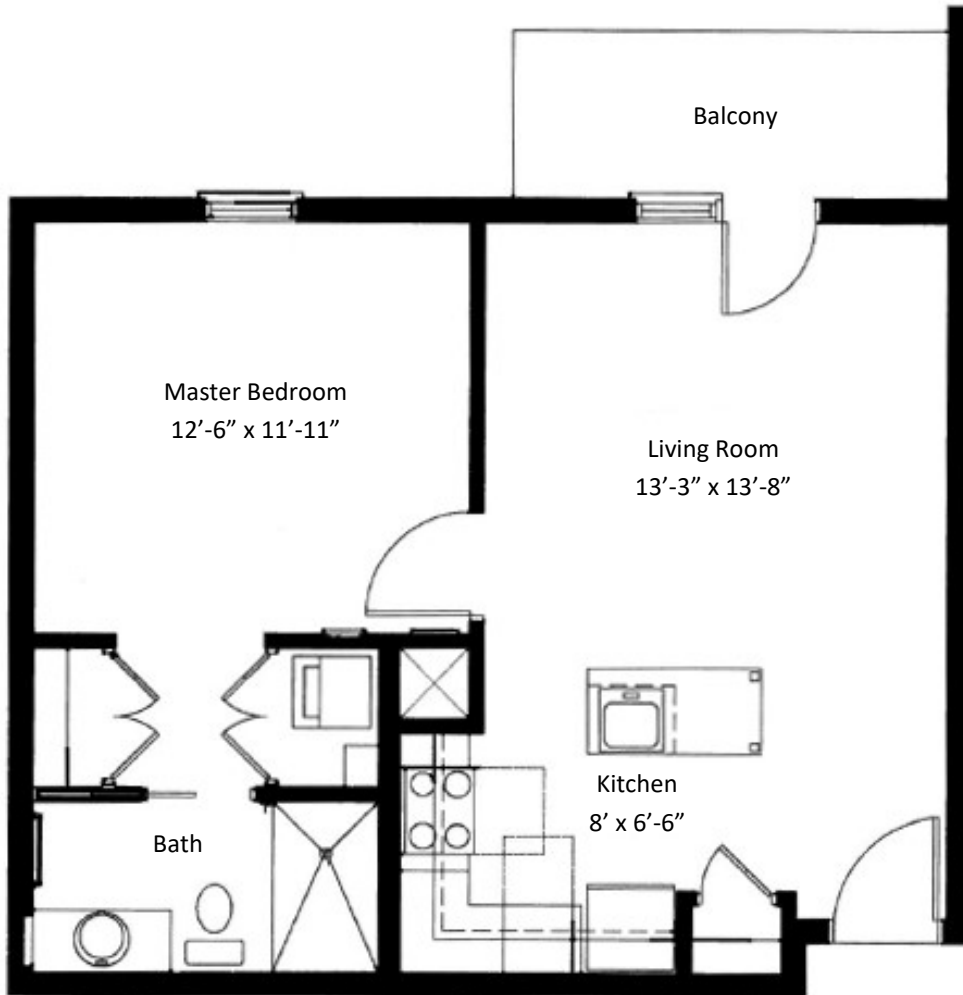
600 Willow Valley Square, Lancaster, PA 17602-4866  
800.770.5445 | [WillowValleyCommunities.org](http://WillowValleyCommunities.org)

All dimensions are approximate and subject to construction tolerances. Floor plans are not to scale in relation to one another and represent the residences in their original configuration. Previously occupied residences may include customizations that altered the original floor plan.



**WILLOW  
VALLEY**  
COMMUNITIES

# APARTMENT HOME



**WATSON**  
**One Bedroom**  
625 square feet

Limited Time Offer\*

Entrance Fee ~~\$141,600~~

**\$119,600**

Second Person Fee **\$26,000**

Monthly Fee **\$2,252**

*\*Promotional pricing available through July 31, 2019*

600 Willow Valley Square, Lancaster, PA 17602-4866  
800.770.5445 | [WillowValleyCommunities.org](http://WillowValleyCommunities.org)

All dimensions are approximate and subject to construction tolerances. Floor plans are not to scale in relation to one another and represent the residences in their original configuration. Previously occupied residences may include customizations that altered the original floor plan.



**WILLOW  
VALLEY**  
COMMUNITIES